

**DENISON COMMUNITY HIGH SCHOOL & WESTERN IOWA TECH COMMUNITY COLLEGE
COURSE OUTLINE**

Karen Kennedy - Instructor

COURSE IDENTIFICATION:

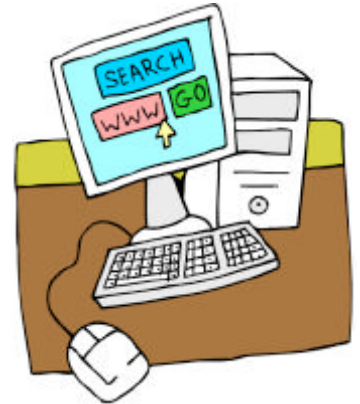
COURSE TITLE: Dreamweaver I
COURSE TITLE: Photoshop I

PREFIX & NO.: GRA 252
PREFIX & NO.: GRA 144

SEMESTER CREDIT HOURS: 4

LECTURE & LAB CONTACT HOURS

Contact Hours Per Semester: 67.5
Lab Hours Per Semester: 18.5



COURSE DESCRIPTION AND PREREQUISITES/COREQUISITES:

Introduction to the Macromedia® Dreamweaver software package. Topics include planning a web site, defining a root folder, adding links, forms, text, frames and graphics to a web page. Students will create a basic web site and upload it to a server. This course also includes an introduction to the Adobe® Photoshop software package. This course is the first in a series focusing on the software used to manipulate images used for digital and printed media. Topics include introduction to the software interface, tools, palettes, selections, layers, basic retouching techniques, basic realistic editing techniques, and introduction to collage and importing images from scanners and digital cameras. There will also be a brief exposure to Macromedia® Fireworks and Macromedia® Flash software packages.

COURSE OBJECTIVES:

The course will provide information which, should enable the student to:

1. Use Adobe® Photoshop to manipulate digital images to improve quality, focus of audience, and clarity of concept.
2. Generate a scan from existing artwork for use on a design project.
3. Create basic collaged images for use on a design project.
4. Develop a backup system for storing data safely.
5. Create a simple web site using Dreamweaver
6. Utilize Dreamweaver tools to design and organize content on a web page.
7. Upload a website

LEARNING CLIMATE:

In this course, you will work with me and your fellow students to complete lessons and assignments. There are two key points to remember:

- You are expected to participate in class and complete all assigned exercises.
- You are responsible for your learning and for helping others.

CRICIAL THINKING:

You are expected to use critical thinking and creative problem solving to complete exercises.

ASSIGNMENTS:

Grading will be based on attendance, participation, teamwork participation and successful completion of various assignments and projects throughout this course. Quizzes and tests will be given periodically to check your knowledge and web design skills.

Web sites can always be made bigger and better. You are expected to continue improving your web site to attain the best quality possible. Your web sites cannot be declared “done” early. Consult with Mrs. Kennedy if you feel you are at an impasse for any reason.

Assignments, quizzes, or tests given during an unexcused absence will not be allowed to be made up.

QUALITY COUNTS:

Your web site needs to have the level of dignity that clients would expect if you were on a job. Check spelling and grammar as you go. Have a friend or a parent proofread your site periodically, or trade proofreading duties with a classmate. Writers are often myopic (poor vision) about their own mistakes. Be grateful if someone points out an error. You don't want errors to be on your site after you make it accessible to the public.

ATTENDANCE:

You are expected to attend each class and to be on time. Much of the class progress depends on your involvement and participation. Come to class prepared! Students will be responsible for completing all assignments as they come due. Each assignment should be handed in on time.

SAVING YOUR WORK:

All of your work should be saved on your computer. Work should not be deleted until you have seen the final grade in PowerSchool. You will also be responsible to produce an electronic portfolio so don't get too anxious to delete your materials.

NOTES ABOUT PRODUCTION:

Production relies heavily on computers; production is a collaborative process, requiring different people to work together; production is a process requiring a number of steps—it is not something that can be done at the last minute.

- Computers will crash at the worst time, data will be lost and you may find that a computer is not available when you are. These are not considered emergencies but part of the normal process of production.
- Working with other people means aligning schedules, which is sometimes difficult. Having difficulty reaching your partner, arranging for joint work time, or mutually reaching decisions are “normal” problems. Your responsibility is to resolve them before they reach the status of emergency.
- You will be reserving a limited amount of equipment which you will be sharing with other students. It may not be available “at the last minute.” Arranging for production equipment is a “normal” production problem—your responsibility is to work and plan ahead.